



Lesson Sequence



1. Understand that seeds grow into plants



2. Identify the basic parts of a plant and tree



3. Understand that different plants can grow in the same environment



4. Know the difference between deciduous and evergreen trees



5. Know that fruit and vegetables are varieties of plants



6. Record the growth of a plant



wildflower
flowers that are not planted by a person

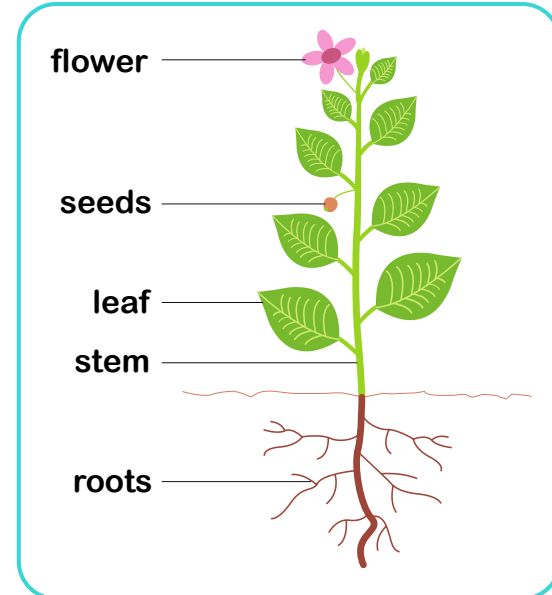
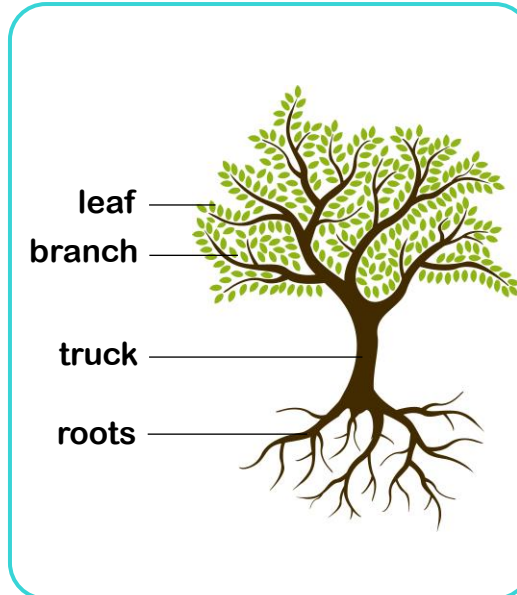
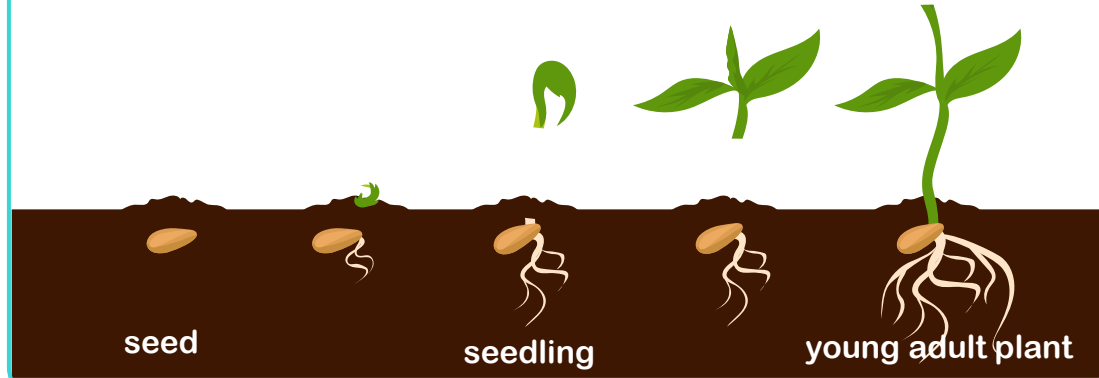


deciduous
trees that drop their leaves every year



evergreen
trees that keep their leaves all year round

Seeds grow into larger plants such as flowers, bushes and trees.





Circle the wildflowers.

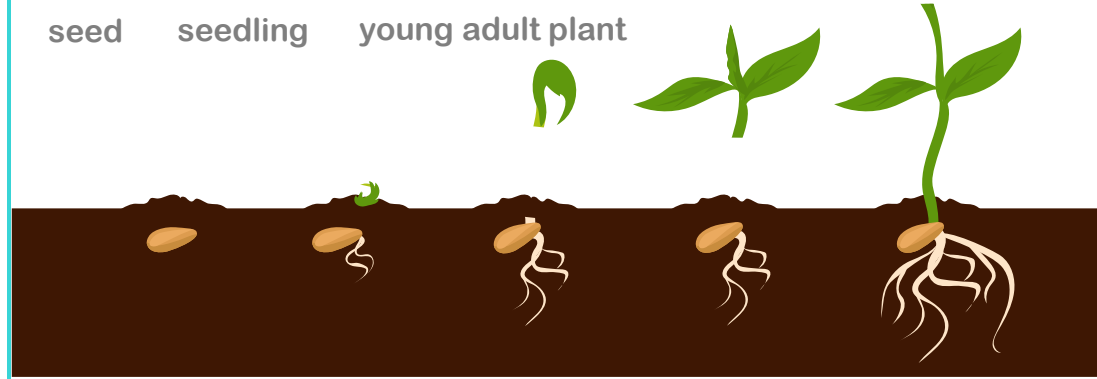


Circle the tree which loses its leaves during the winter.



Draw a line between the different stages of a plant's growth.

seed seedling young adult plant



Label the parts of the plant.

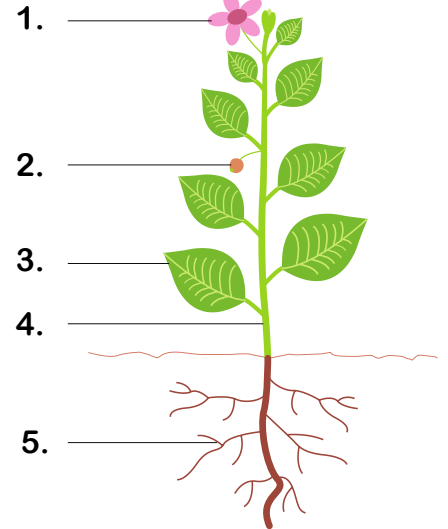
roots = ____

seeds = ____

stem = ____









leaf = ____

flower = ____





Rocket Words

	seed	the small part of a plant which grows into a new plant
	plant	a living thing that has roots, a stem or trunk and leaves
	stem	part of a plant that supports a flower
	petal	a leaf that forms part of a flower and is usually coloured
	deciduous	trees that drop their leaves every year
	evergreen	trees that keep their leaves all year round
	fruit	part of a plant that has seeds
	vegetable	part of a plant that can be eaten